

brewmaxx

Process Control Systems. MES inside.
The Plant IT™ industry solution for breweries.

Works with

EcoEtruxure™

brewmaxx Batch Cockpit

The entry point to integrated batch analysis

The add-on brewmaxx Batch Cockpit from ProLeiT is a software solution for greater transparency and more effective plant utilization in the process industry. The add-on is designed for evaluating, processing and validating production data. It additionally facilitates efficient analysis of the large volumes of batch and process data generated during production proceedings.

brewmaxx Batch Cockpit provides process plant operators with a precise overview of their production activities – meaning correlations are detected and potentials fully used. Since data sovereignty, in other words the ability to know which batch is produced when, how and where and at which level of quality, is the key to efficient production processes.

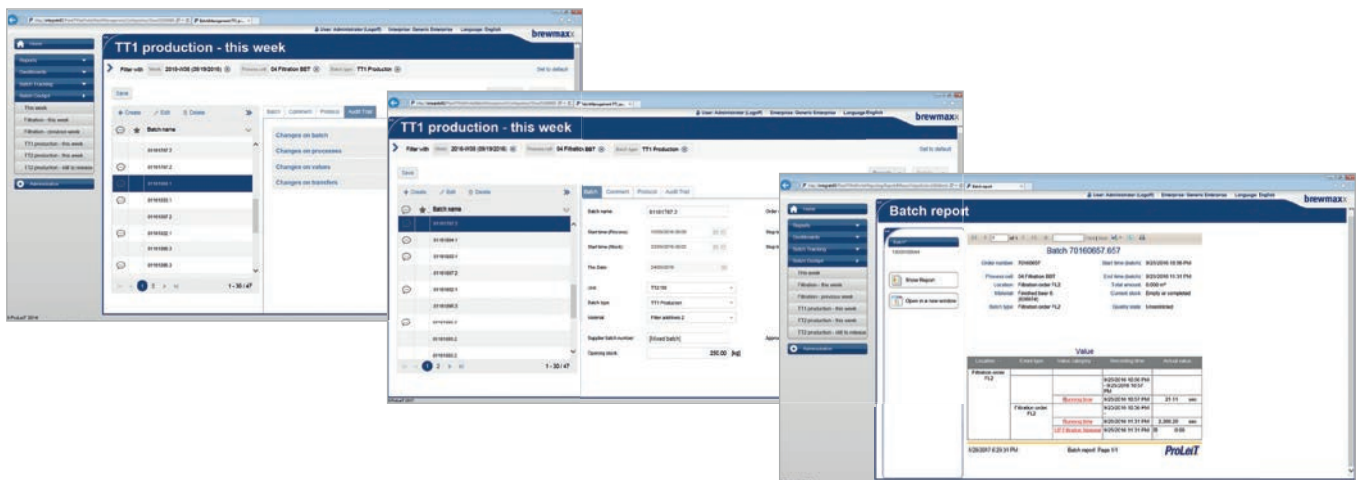
proleit.com

ProLeiT

by **Schneider** Electric

The advantages of Batch Cockpit:

- Post-processing of manually recorded production parameters – Any errors can be corrected directly, time-consuming and cost-intensive data corrections in higher-order systems are no longer required.
- Subsequent input of non-automated processes – Non-automated processes, such as manual additions or laboratory samples, can be subsequently entered.
- Freely definable filters – Convenient and targeted analysis of production data. Filters, such as “time period”, “batch type” and “status”, enable users to focus on relevant data. Even off-specification batches can be displayed with just one click.
- Audit Trail enables the review and analysis of batch records – Extensive traceability of changes, incl. information about the user, the applied end device and when the change was executed, excellent preparation for internal and external audits.
- Seamless connection to our MES solution brewmaxx Integrate – Productive preparation and full traceability of generated information via analysis dashboards and batch tracking.



proleit.com

ProLeiT
by Schneider Electric

ProLeiT GmbH
Einsteinstr. 8 | 91074 Herzogenaurach | Germany
Tel: +49 9132 777 0 | Fax: +49 9132 777 150 | info@proleit.com

© 2021 ProLeiT

Plant iT and brewmaxx are registered trademarks of ProLeiT. Schneider Electric, Microsoft, Rockwell Automation, SAP, Siemens, Windows and all other brand names used and not mentioned here are registered trademarks of the respective companies. The information in this document contains general descriptions and performance features that may not always apply to the concrete application case in the specified form or may change to subsequent further development of the different system components. Some of the graphics and images used in this document are just examples and may differ from the delivery status. ProLeiT and all subsidiaries are responsible for system functions and services according to the respective express contractual scope of supply and services only.