

Plant iT.

Process Control Systems. MES inside.

Works with

EcoEtruxure™

Plant iT compact

Process control solution for compact units

One of the leading process control systems for the food & beverage industry is available as a compact entry-level solution. This package consists of Plant iT compact with pre-configured automation classes, up to two workstations and one programmable logic controller (PLC).

Manufacturers as well as machine and plant suppliers can utilize Plant iT compact for applications ranging from production data acquisition (PDA) through to full process control. It is an optimized solution for smaller plant areas like utilities, water treatment, filtration and CO² plant.

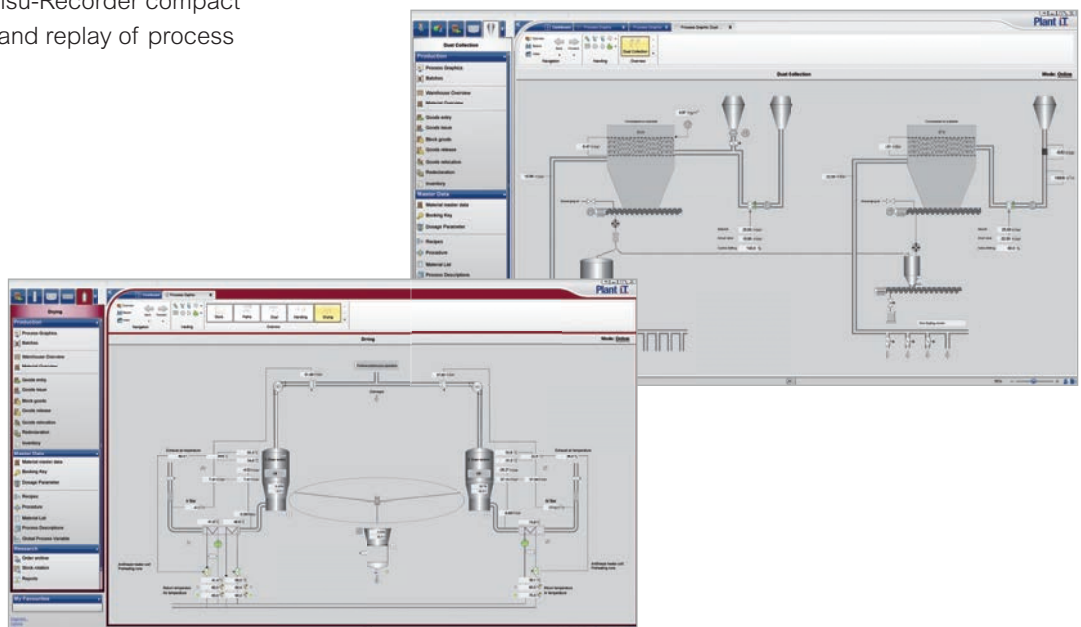
proleit.com

ProLeiT.

by **Schneider** Electric

Benefits of Plant iT compact:

- Minimal hardware requirements – serverless process control system
- Easy handling and operation – pre-configured Plant iT process control system
- Integrated Ethernet extension* – use of the onboard Ethernet interface of the PLC
- Minimal investment costs – for software and hardware
- Multi-language support – language packages for english, spanish, german, french, portuguese and russian
- Scalability of Plant iT – reusability of engineering makes expansion to full system easy
- License-free Plant iT Visu-Recorder compact included – Recording and replay of process activities



* for Siemens controllers only

proleit.com

ProLeiT
by Schneider Electric

ProLeiT GmbH
Einsteinstr. 8 | 91074 Herzogenaurach | Germany
Tel: +49 9132 777 0 | Fax: +49 9132 777 150 | info@proleit.com

© 2021 ProLeiT

Plant iT and brewmaxx are registered trademarks of ProLeiT. Schneider Electric, Microsoft, Qlik, Rockwell Automation, SAP, Siemens, Windows and all other brand names used and not mentioned here are registered trademarks of the respective companies. The information in this document contains general descriptions and performance features that may not always apply to the concrete application case in the specified form or may change to subsequent further development of the different system components. Some of the graphics and images used in this document are just examples and may differ from the delivery status. ProLeiT and all subsidiaries are responsible for system functions and services according to the respective express contractual scope of supply and services only.